

Psalm 98:3

The Christogram

He has remembered his steadfast love and faithfulness to the house of Israel.
All the ends of the earth have seen the salvation of our God.

February 2025
Volume 63 Issue 2



In this issue

Anniversaries	4
Birthdays	4
From the Pastor	6
From the President	8
Mary Martha	9
Outreach	11
Council	12
Central America Missions	16



FIND US ON THE WEB clclakeland.org



To give online, scan this QR code to go to the "Giving" website page.

Christ Lutheran Church
2715 Lakeland Hills Blvd
Lakeland, FL 33805
863-682-7802

CHRIST LUTHERAN STAFF

Pastor

Rev. Christopher Hazzard
(cell) 863-732-1322

Office Secretary

Terry Krum
863-682-7802

Council Officers

President Kim Kaniecki
Vice-President Dawn Peters
Secretary Robin Fox
Treasurer Karen Crickenberger
Finance Secretary Emma Block
Christian Ed Rev. Thomas Block
Outreach & Missions Wendy Rogers
Stewardship Lora Wacker
Trustees Sandy Spanier
Youth Group
Communications Kris Welch

Board of Elders

Carlos Orellana (Head)
Keith Kallstrom
Steve Rosane
Fred Sterns
Dave Wacker

Committee Chairpersons

Fellowship Coordinators

Joyce Munz and Charlotte Mantz

Altar Guild

Dawn Peters and Charlene Rosane

Director of Music

Elena Miraztchiyska

Endowment Fund

Helen Borgwardt

Mary-Martha Guild

Charlotte Mantz

E-Mail Addresses

Pastor

pastor@clclakeland.org

Office

clcsecretary@gmail.com

Christ Lutheran Guiding Statement

Christ Lutheran Church is a growing family of believers who love, accept, and welcome all, so that we may share God's love in word and deed.

Serving in February

February 2

Elder Fred Sterns
Lector Carlos Orellana
Greeters
Audio Kim Kaniecki
Video Video TD: Kris Welch
GFX/Stream: Roland Feickert

February 9

Elder Steve Rosane
Lector John T. Doherty, Jr.
Greeters John T. Doherty, Jr.
Audio Judi Rudolph
Video Video TD: Josiah Hazzard
GFX/Stream: Robin Fox

February 16

Elder Fred Sterns
Lector Charlotte Mantz
Greeters
Audio Kyle Welch
Video Video TD: Josiah Hazzard
GFX/Stream: Andrea Hazzard

February 23

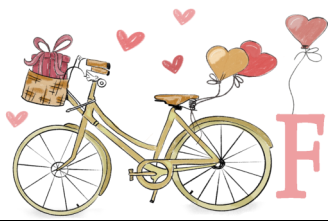
Elder Keith Kallstrom
Lector
Greeters Bob and Cheryl Langanke
Audio Maria Hazzard
Video Video TD: Kris Welch
GFX/Stream: Cheryl Erwin

ALTAR GUILD SERVICES

Helen Borgwardt and Gwen Snook

SATURDAY EVENING WORSHIP @ 5:30 PM

Elder Keith Kallstrom 2/1, Carlos Orellana 2/8,
Dave Wacker 2/15, Steve Rosane 2/22
LectorDebbie Smith/ Gerie Slaten/
Carlos Orellana, Steve Rosane



FEBRUARY

Christ Lutheran Church

2715 Lakeland Hills Blvd

Phone: 863-682-7802

Sun	Mon	Tue	Wed	Thu	Fri	Sat
 = <i>Baseball Parking</i>						1 5:30p Worship
2 8:30a Bible Study 10a Worship Elders Meeting	3	4 Adopt a Block @ 11a Outreach @ 5:30p	5 Trustee WD 9a Private Com. 1:30 - 2:30p Jr. Conf @ 5:15 No Choir	6 Quilters @ 10a Bible Study @ 10a	7	8 5:30p Worship
9 8:30a Bible Study 10a Worship Souper Bowl Sunday	10 Council Mtg @ 6:30p	11 Adopt a Block @ 11a Grief Share @ 1 pm	12 Trustee WD 9a Mary Martha mtg @ 9:30a Private Com. 1:30 - 2:30p Jr. Conf @ 5:15 No Choir	13 Quilters @ 10a Bible Study @ 10a	14	15 5:30p Worship
16 8:30a Bible Study 10a Worship Communication Board Mtg	17 9 AM Deadline for Newsletter items	18 Adopt a Block @ 11a Grief Share @ 1 pm	19 Trustee WD 9a Private Com. 1:30 - 2:30p Jr. Conf @ 5:15 Choir @ 7p	20 Quilters @ 10a Bible Study @ 10a Civitan mtg @ noon	21	22 5:30p Worship 
23 8:30a Bible Study 10a Worship	24 	25 Adopt a Block @ 11a Grief Share @ 1 pm	26 Trustee WD 9a Private Com. 1:30 - 2:30p Jr. Conf @ 5:15 Choir @ 7p 	27 Quilters @ 10a Bible Study @ 10a Civitan mtg @ 6p @ Il Forno's (North) 	28	

Bulletin announcements are due each Tuesday by 9:00 a.m.

**The Infirm
and
The Homebound**

Remember to keep these people in your daily prayers.

- Carolyn Calendar
- Betty Coombs
- Joanne Ditton
- Donita Duncan
- Gerald Frizzell
- Rosie Fyffe
- Helen Gavin
- Donna Grant
- Pam Hanson
- Bob Kossel
- Fran Klug
- Sally Martel
- Nancy Matter
- Rose McLaughlin
- Fran Murphy
- Jerry Poole
- Don Rohrbach
- Paul Schierschwitz
- Natalie Thiele
- Norma Tipton
- Amy Wilson
- Fred and Marlene Yost

Fred Sterns.....	Feb 4
Steve West.....	Feb 4
Dick Neuenfeldt.....	Feb 4
Gary Hancock.....	Feb 5
Jonelle Butler.....	Feb 7
Judy Veal.....	Feb 8
Mary Heinz.....	Feb 10
Kyle Welch.....	Feb 10
Skylar Peterson.....	Feb 16
Nancy Matter.....	Feb 17
Robert Langanke.....	Feb 21
Amanda Peterson.....	Feb 21
Donna Coates.....	Feb 24
Kathy Siedenstrang.....	Feb 25
Delaney Peterson.....	Feb 25
Charlotte Mantz.....	Feb 27
Anne Smith.....	Feb 27



John and Allison Gillespie.....	Feb 1 (33 yrs.)
Christopher and Erica Bell.....	Feb 5 (14 yrs.)
Jack and Joan Kersten.....	Feb 8 (56 yrs.)
Gary and Mary Witte.....	Feb 14 (23 yrs.)
Kris and Andrea Welch.....	Feb 16 (1 yr.)
David and Lora Wacker.....	Feb 27 (41 yrs.)



Thank you Cheryl Erwin and Charlene Rosane for serving for the month of January. Helen Borgwardt and Gwen Snook will serve for the month of February. Thank you for your service to the Lord and Christ Lutheran Church. Are you interested in serving on an Altar Guild monthly team? Please contact Dawn Peters.

If you are a member or an associate member, and your information is missing or incorrect, please notify the church office.

Baptismal Birthday Blessing

Gracious Lord, we give thanks that in Holy Baptism we receive forgiveness of sins, deliverance from death and the devil, and eternal salvation. On this baptismal anniversary, bless [name] continually by Your Word and Spirit that [he/she] may faithfully keep the covenant into which [he/she] has been called, boldly confess [his/her] Savior, and finally share with all Your saints the joys of eternal life; through Jesus Christ, our Lord.

- Linda Storts Feb 1
- Jonelle Butler Feb 5
- Betty Coombs Feb 5
- Reagan Bell Feb 8
- Alfred Miller Feb 9
- Lois Foster Feb 15
- Scott Seiferth Feb 26
- Stacey Orellana Feb 28

*First year Anniversary as
Member of Christ Lutheran Church*

Nicki Davis Feb. 4

**DON'T FORGET BAGS FOR
TALBOT HOUSE —**



Thank you to all of you who continue to support this ministry! Talbot House does extraordinary things to help the homeless. We are blessed to share in that ministry! Their doors are open to both men and women and they provide meals, shelter, & clothing, and direct them to medical care as needed. We collect offerings of canned goods-meat, vegetables, fruit, soup, paper goods-paper towels, toilet paper, napkins; cleaning supplies; soap-dishwashing, personal soap, laundry; toothbrushes & toothpaste. We also collect gently used clothes -free from stains, and have working zippers and buttons. There are especially marked baskets in the mail room at the back of the church to place your offerings. Our pickup day is the second Tuesday of every month. We also have a box on top of the table where you may place unused medicines, empty pill bottles, and unopened bottles of over the counter medicines. Talbot House uses the empty pill bottles to measure out soap and shampoo for the residents. Please remove labels from the empty bottles. Large containers of spices, flour, and sugar are real blessings.



From the Pastor.....

GriefShare®

SUPPORT GROUP

No matter what the circumstances, grief is a painful, confusing process. A GriefShare group is a safe, welcoming place where people understand the difficult emotions of grief. At this 13-week support group program, you'll discover what to expect in the days ahead and what's "normal" in grief. Since there are no neat, orderly stages of grief, you'll learn helpful ways of coping with grief, in all its unpredictability—and gain solid support each step of the way.

At each weekly meeting, you will view a video featuring respected counselors, pastors, and healthcare professionals on grief-related topics, plus you'll hear relatable personal stories of grief. After that is a small-group discussion to allow people time to talk, share support, and personally apply what they learned on the video. Everyone will receive a book to take home filled with valuable exercises for navigating their personal grieving process.

Coming soon:



Lent provides us with a perfect chance to explore the extraordinary attributes of our Savior, Servant and Friend, Jesus. It is a time to marvel at the many blessings we received when he laid down his life for us on the cross and then rose victorious from the grave. Each service in this series dwells upon a different aspect of our greatest Friend and what each characteristic means to us as his followers and friends.

Our series starts on Ash Wednesday, March 5th, at 6:30 p.m. Local LCMS pastors will be joining us the following Wednesdays of Lenten to preach on the themes of the series.

Continued on page 7

Continued fro page 6

Terry Krum, our church secretary, has notified us that she intends to retire following Easter. She has served faithfully and well, and while well deserving of retirement, I am saddened to see her go. If you know of anyone who might make a good candidate to fill her shoes and is willing to serve, please have them contact the church office with his or her information.

Pastor Chris

HOT DOG CONCESSION STAND SPRING TRAINING

Now is the time to volunteer for the CLC Hot dog Concession Stand! Once again we will be selling quarter pound, all beef hot dogs, chips and water. February 22nd is our first game. We will need five (5) people in our stand. There is an average of three (3) games per week. A sign-up sheet is on the bulletin board in the Narthex. Sign your name, phone number and days you can help. We set up at 9-9:30, and will finish grilling around 1, and then we dismantle our concession site. Contacts are John Freer @ 863-660-6438 or Charlene Rosane @ 863-660-1689. This is a great way to meet people from all over the USA and even abroad. Also a good way for our fellowship to reach beyond the CLC grounds. Appreciate all your time and efforts, thank you in advance.



Looking for Christ Lutheran in social media? Check us out at our website: www.clclakeland.org
Feel free to leave comments! We are also on Facebook at: Christ Lutheran Church Lakeland-LCMS. Please like, follow, and share on your Facebook page. You may also leave comments on our Facebook page.

A Word from the President

YES, INDEED, YOU ARE BEING WATCHED!

I don't know about you, but I think that most situations we encounter in life gives us an opportunity to exhibit the depth and quality of our walk with God. Whether it be a simple encounter with a store clerk or a difficult encounter with a co-worker. Each moment presents its own unique opportunity for us to be an example of Christ and His love for them. How we react, what we say, what we do or even what we don't say or do, all shows our understanding of God's love in our life. It is our job to show those we encounter how much that love means to us. It can be done in something as simple as a kind word to a frustrated and rude clerk.

People watch us, we Christians. They watch us. Don't think they don't. What are they seeing? I hope and pray they are seeing Christ in some way, shape or form. We have been commissioned by Christ himself to share and show His love to the world. We have a job to do...every day. With everyone. In every way.

May the depth and quality of your understanding of God's love in your life increase more this year than ever before. May that understanding change the way you interact with people for the better. Quite possibly it will bring someone to the foot of the cross because they've seen what it truly means to be a Christian simply by watching you.

I urge you to help that along by delving into the Word of God with the opportunities available here at Christ Lutheran and also in your own personal devotion time.

Blessings on your month!
In Christ,

Kim Kaniecki
Council President



MARY MARTHA



Mary Martha met on January 8 for our first meeting of 2025. Mary Martha meets the 2nd Wednesday of each month from September to May. We meet at 9:30 am. All women of Christ Lutheran Church are invited to attend our meetings as well as other events we hold. Our next meeting will be in the Fellowship Hall at 9:30 am on February 12th!

Purse Purge time!

Mary Martha will host our annual Purse and Accessory sale on Sunday, March 2, after our worship service and during Fellowship time! If you have any donations for our sale, please place them in the box in the narthex!



The Winter Haven Zone Spring Rally of Lutheran Women In Mission will be held on March 1 at Our Savior Lutheran Church in Zephyrhills. The theme will be based on Jeremiah 17:14; "Heal me, Oh Lord, and I shall be healed; save me, and I shall be saved, For You are my praise." Our Speaker and our Gifts from the Heart will feature "Phil's Friends," a support ministry for cancer patients.

Mary Martha's Spring Luncheon will be held on March 12 after our regular meeting. Venue to be announced.

Mary Martha will host a fashion show on Saturday, March 29 from 1-4 pm! Appetizers will be served. The price is \$10. Fashions will be featured from Bungalow Boutique. Models are needed! Call Charlotte, if interested! 863-409-6270. Tickets and posters will be available soon! We will have ticket sales before and after worship services.



Our next Memorial Team will be Team 1.

Please contact Charlotte Mantz with any inquiries! 863-409-6270

In His Service

Charlotte Mantz

Ladies Spring Servant Event benefitting Phil's Friends

Join in - Saturday, March 1, 2025
At: Our Savior Lutheran Church
5626 20th St., Zephyrhills

What time?
9am - Fellowship
9:30 - Business meeting
10:00 - Bible Study on Bible verse
10:30 - Phil's Friends speaker somebody
11:00 - Brunch (\$10 donation)
11:30 - Servant Event

Philsfriends.org

Mission : To provide Christ-centered support and hope to those affected by cancer.

Values: We are committed to carrying out our mission in a Christ-centered, caring culture dedicated to supporting individuals and families impacted by cancer.

Gifts from the Heart for Phil's Friends

Puzzle Books
Lip Balm
Journal (5x7, not spiral)



Tissue Packs (purse size)
Unscented Lotion (5oz or smaller)
Biotenen (only) (6oz or smaller)
Decks of Playing Cards

Servant Event for Phil's Friends

Many hands
are needed!
There are 40
fleece blankets
to make.



All blankets
& gifts
will be used
in Florida

OUTREACH

Outreach Fellowship donations 2025:

January Orphan Grain Train
February Senior Orphans
March VISTE
April Central American Mission
May Youth Group - LCMS National Youth Gathering in New Orleans, LA 2 youth and 2 chaperones attending - Approximate cost \$4000
June, July, August "Lighter" Fellowship hours (cookies, snacks, fruit etc) - Benevolent Fund (new) If you would like to sponsor one of these "lighter fellowships", talk to Wendy Rogers. There will also be a sign up sheet in the Narthex starting in March.

BABY BOTTLE CAMPAIGN: We will again be doing the Baby Bottles to benefit Options for Women. They will be available beginning January 25. Please return by March 2.

BASEBALL PARKING: Sign up for Baseball Parking volunteers is in the Narthex. The first home game is February 22. This is a great fundraiser for CLC, a way to get to know other church members, and have a lot of fun. ALL HANDS ON DECK!

SOUPER BOWL SUNDAY - February 9th

Bring your favorite soup (to share) and a can or two of soup to benefit Adopt A Block (AAB) . A sign up sheet is on the Outreach bulletin board.



CIVITAN

Lakeland-Polk Civitan monthly meetings are held on the THIRD THURSDAY of each month, noon, at Christ Lutheran Church.

We will begin holding evening meetings (on a trial basis) on the fourth Thursday of each month) beginning January 30, 6pm @ Il Forno's (North), 6617 N. Socrum Loop Rd, Lakeland 33809. These will be more for fellowship with an abbreviated meeting.

Order from menu; self pay

JOIN US AT EITHER OR BOTH AND BRING A FRIEND!

Wendy Rogers
Outreach

Christ Lutheran Church Council Meeting in a Nutshell

By Robin Fox, Council Secretary, January 2025



Treasure Report: Karen Crickenberger

For the month of December, our actual performance is a negative, compared to the budgeted amounts. For YTD, our actual performance is at a negative, compared to budgeted amounts. The Stewardship Report shows that our total church income is about 13% higher this year than it was at the end of December 2023. There was one noteworthy expense or decrease in assets for December 2024 for the deposit on our new roof for the Fellowship Hall.

Financial Secretary: Emma Block

No Report due to computer problems

Pastor Report: Pastor Christopher Hazzard

GriefShare will start in February, time and day of week TBA.

We are participating in the Round Robin Services again this Lenten season.

Important Dates:

March 5th: Ash Wednesday

March 6th: Deadline for overtures, delegates, and nominations to the FLGA District Convention

March 10th: Circuit pastors meet here

April 20th: Easter

June 5th-7th: FLGA District Convention, Embassy Suites-Orlando Lake Buena Vista

Continued on page 13

Continued on page 12

President: Kim Kaniecki

Ensure that all board members have a copy of all current governing documents.
A reminder to all board chairs with the potential for board members: get names and contact info for all board members they have to date. Council needs to approve all board members as they are added.

Vice President: Dawn Peters

Altar Guild is still in need of 2-3 more people. Charlene is going to work on refreshing some of our altar flowers. We are also putting out feelers for Easter flowers. Mums from Peterson's are not an option for 2025 as the farm they were getting them from lost their entire crop to Helene. We will be having an Altar Guild meeting during Lent (date TBD) to discuss our plan for Holy Week, especially Maundy Thursday's stripping of the altar. We need to update times on the website.

Christian Education: Pastor Block

Nothing to report.

Board of Elders: Carlos Orellana

Attendance on Sundays are running in the 100's. Saturdays are running in the 20's
4 new members and 1 member resigned.

Stewardship: Lora Wacker

We need to add more family pictures to our photo directory.
No community is built yet.
Souper Bowl Sunday soup cans will go to the Dream Center.

Continued on page 14

Continued from page 13

Board of Outreach: Wendy Rogers

Fellowship for 2025

January - Orphan Grain Train (they are in the process of adopting an orphanage in Ukraine)

February - Senior Orphans

March – VISTE

April - Central American Mission

May – Youth Group

Outreach

Lighthouse Angel Tree - 17 children received gifts (8 were Olga's) remaining cash was donated to Olga, a check for \$-- went to the Outreach account. Our quilters donated quilts and Civitan donated goodie bags for each of the women in the shelter (16).

Options for Women - Baby Bottles will be available in the narthex on January 25.

Baseball Parking – Pastor Chris will be handling the purchase of signs for baseball parking.

The Outreach bulletin board has been updated for the New Year. Great job Cheryl!

Souper Bowl Sunday will be February 9. The donated cans will be donated to the Dream Center of Lakeland. We will post a sign-up sheet for the soups.

We haven't been notified who our new Seminary student is yet.

We will be having a Benevolent Fund beginning ASAP.

Board of Communications: Kris Welch

The check for the listening system has been requested and sent. Once MABE receives it, the work will be scheduled.

Trustee Report: Sandy Spanier

Christmas decorations were put up and taken down by a group of volunteers.

Retention ponds excavated and sodded.

GAF roofing claim settled. Reroofing will start soon.

Several updates and repairs

continued on page 15

Continued from page 14

Youth Board: Pastor Hazzard

Josiah Hazzard and Matthew Alexis will be attending the 2025 LCMS National Youth Gathering in New Orleans, LA, July 19th-23rd. Pastor Christopher Hazzard and Cassandra Alexis will chaperone.

Theme: Endure

Theme verse: "Therefore, since we are surrounded by so great a cloud of witnesses, let us also lay aside every weight, and sin which clings so closely, and let us run with endurance the race that is set before us, looking to Jesus, the founder and perfecter of our faith, who for the joy that was set before him endured the cross, despising the shame, and is seated at the right hand of the throne of God. Consider him who endured from sinners such hostility against himself, so that you may not grow weary or fainthearted." (Hebrews 12:1-3)

Registration \$425 x 4 = \$1700.00

Gathering Hotel \$180 x 2 rooms x 4 nights = \$1440.00

Trip hotel: \$80 x 2 = \$160.00

Full size car rental: \$442.00/week

Gasoline: \$200.00

Parking?

Food: Plan to bring groceries for 2 meals for the day; much depends upon hotel assigned.

Cost estimate: \$1000.00 per person

Thank you in advance for the congregation's support, especially the chili cookoff!

New Business:

Resignation notice given by Terry Krum at the end of May 2025.

Audit committee needs to be formed.

Respectfully submitted,

Robin Fox

Central American Missions February 2025



I want to start by thanking Christ Lutheran Church; the Outreach Board, who gave me \$400 for the Honduras Christmas fund. With this fund we gave \$200 to the Franciscan Friars; they share everything with the community they serve. \$100 each for Hogar Nazareno, New Horizons, and the House for the Elderly. We also gave \$450 for San Benito Jose. They all replied being very thankful for the help they have received for Christmas. The most touching reply came from the Franciscan Nuns “ we have been praying for help to come; your help came right in time.”

I know there is need wherever we look; sometimes that need can be our next door neighbor. For this reason we are even more grateful to Christ Lutheran Church. Keep the Central American Mission in your prayers that God is helping us to make a difference in people’s life.

Carlos Orellana



Fr. Richard one of the Franciscan Friars receiving our donation for Christmas.



Our donations also contains toys for the kids

Boys from New Horizons showing their t-shirts.



New Horizons Orphanage only for boys with one of their Teachers.



Hogar Nazareno Orphanage for girls and boys.

Las Hermanas Franciscanas de la Inmaculada y los abuelos del hogar de ancianos "San Judas Tadeo" Les desea Una Navidad en donde el niño Jesús nazca y bendiga sus vidas y proyectos.

The Franciscan Nuns run this house for orphan elders. They were also recipients of our Christmas donations.